

# METAL PLATE MARKING SOLUTIONS

---



Lifelong product ID in the harshest environments



INDUSTRIAL MANUFACTURING



POWER & UTILITY



AUTOMOBILE / AEROSPACE

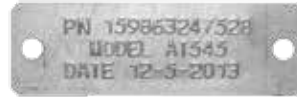


OIL + GAS

## M10HE

### METAL PLATE EMBOSSER

Portable (28 lbs)  
Manual  
Low volume  
No power required  
Accommodates a wide range of plate sizes



## MDT500HE

### METAL PLATE EMBOSSER

Portable (50 lbs)  
Automatic  
Low-to-medium volume  
Ability to run jobs from database  
Accommodates plate sizes: 1.12" x 2" & 1.25" x 2.25"



## ME1000

### METAL PLATE EMBOSSER

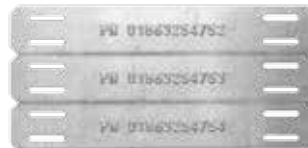
Automatic  
Manual, single feed input/output  
High volume  
Ability to run jobs from database  
Accommodates a wide range of plate sizes – max dimensions 4.5" x 3.5"



## ME2000

### METAL PLATE EMBOSSER

Automatic  
250 capacity input/output hopper  
High volume  
Ability to run jobs from database  
Accommodates a wide range of plate sizes – max dimensions 4.5" x 3.5"



## ME2000DM

### METAL PLATE EMBOSSER W/2D DATA MATRIX BARCODE TECHNOLOGY

Automatic  
250 capacity input/output hopper  
High volume  
Ability to run jobs from database  
Accommodates a wide range of plate sizes – max dimensions 4.5" x 3.5"  
Data matrix barcode holds up to 64 characters, in a range of matrix



## ME2000VS

### METAL PLATE EMBOSSER W/BUILT IN VISUAL INSPECTION & VERIFICATION SYSTEM

- Automatic
- 250 capacity input/output hopper
- High volume
- Ability to run off database
- Accommodates a wide range of plate sizes – max dimensions 4.5" x 3.5"
- Vision system captures images of any single line plate data for verification



## MDM1000

### METAL PLATE DOT PEEN MARKING

- Automatic
- Manual, single feed input/output
- High volume
- Ability to run jobs from database
- Accommodates a wide range of plate sizes – max dimensions 7" x 4"



Cost-effective alternative to laser engraving

## MDM2000

### METAL PLATE DOT PEEN MARKING

- Automatic
- 250 capacity input/output hopper
- High volume
- Ability to run jobs from database
- Accommodates a wide range of plate sizes – max dimensions 4.5" x 3.5"
- Cost-effective alternative to laser engraving



## MDM1000/2000DM

### METAL PLATE DOT PEEN MARKING W/2D DATA MATRIX BARCODE TECHNOLOGY

- Automatic
- High volume
- Ability to run jobs from database
- Accommodates a wide range of plate sizes – max dimensions 4.5" x 3.5"
- Cost-effective alternative to laser engraving
- Data matrix barcode holds up to 64 characters, in a range of



**CIM USA** is a leading manufacturer of metal plate marking solutions for various sectors including:

manufacturing, automobile/aerospace, oil & gas, and power & utility, to name a few. Embossing machines are implemented in industries with harsh environments where integrity of the information on the tag is crucial. The most common uses for embossed tags



### WHY CHOOSE A CIM SOLUTION?

“The capabilities of CIM embossers as well as the price, lead us to purchase the ME1000 over other solutions we researched.”

- Nexen Energy

“We chose a CIM solution due to pricing and customer service throughout the decision making process”

- Dynaflo

“I have used CIM embossers in the past at other manufacturing plants and have been very happy with the outcome. When the time came to implement an identification solution at this plant, the

- International Paper

“The MDT500 HE is ideal for our application based on its features. Also, other business units in our

- Dominion Power